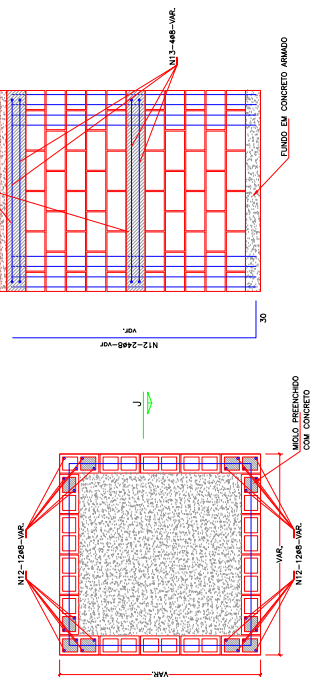
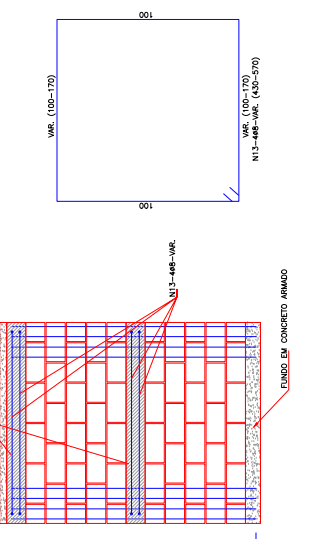




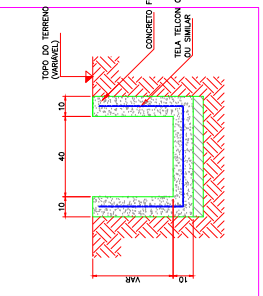
DETALHE TÍPICO DA ARMADURA DAS CAIXAS SEM ESCALA



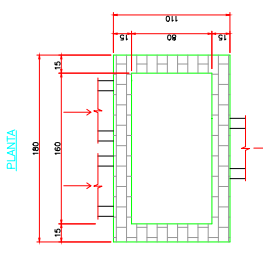
SEÇÃO J-J SEM ESCALA



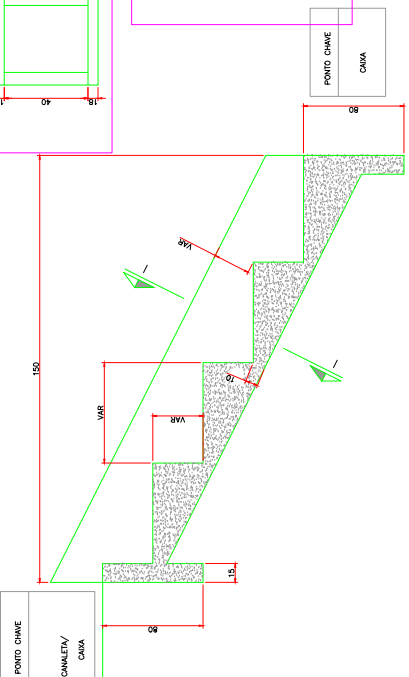
DETALHE CANALETA - 40xVAR SEM ESC.



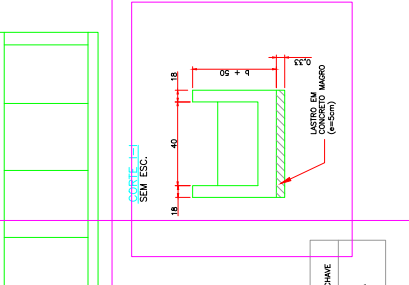
CAIXA 02.03.07 E 08 SEM ESCALA



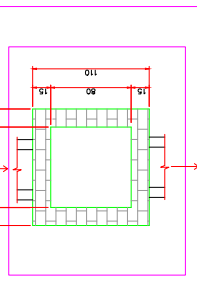
DETALHE TÍPICO DA DESCIDA EM DEGRAUS



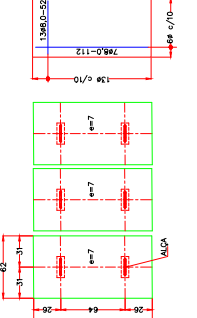
DESCIDA D'ÁGUA EM PLANTA SEM ESC.



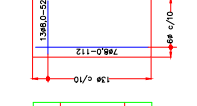
CAIXA 01-04-05-06 SEM ESCALA



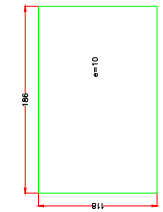
CAIXAS 02.03.07 E 08 TAMPAS PARA CAIXAS (4x) ESC: 1/25



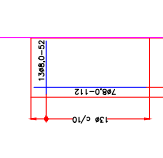
CAIXAS 02.03.07 E 08 ARMADURA DAS CAIXAS (4x) ESC: 1/25



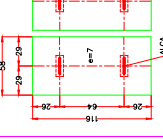
CAIXAS 02.03.07 E 08 LAJE DO FUNDO DAS CAIXAS (4x) ESC: 1/25



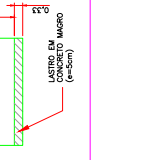
CAIXA 01-04-05-06 TAMPAS PARA CAIXAS (4x) ESC: 1/25



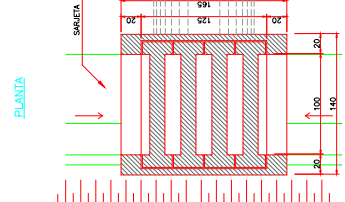
CAIXA 01-04-05-06 ARMADURA DAS CAIXAS (4x) ESC: 1/25



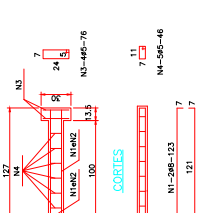
CAIXA 01-04-05-06 LAJE DO FUNDO DAS CAIXAS (4x) ESC: 1/25



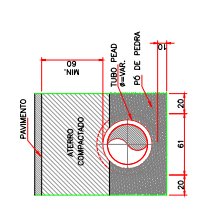
DETALHE GRELHA DE CONCRETO SEM ESCALA



NERVURAS PLANTA



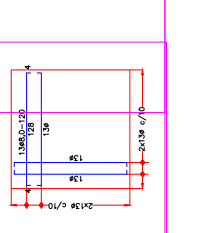
DETALHE TÍPICO DA MELANTIAÇÃO EM PEAO SEM ESC.



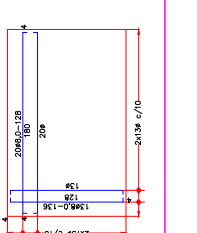
CAIXA 01-04-05-06 TAMPAS PARA CAIXAS (4x) ESC: 1/25



CAIXA 01-04-05-06 LAJE DO FUNDO DAS CAIXAS (4x) ESC: 1/25



CAIXAS 02.03.07 E 08 ARMADURA DAS CAIXAS (4x) ESC: 1/25



CAIXA 02.03.07 E 08 SEM ESCALA

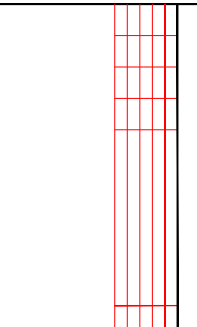
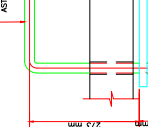
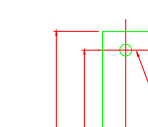
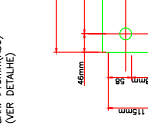


TABELA DE ARMADURA				
N	DIÂMETRO (mm)	COMPRIMENTO (m)	PESO UNIDADE (kg)	PESO TOTAL (kg)
1	12	0.40	0.40	0.40
2	12	0.40	0.40	0.40
3	12	0.40	0.40	0.40
4	12	0.40	0.40	0.40
5	12	0.40	0.40	0.40
6	12	0.40	0.40	0.40
7	12	0.40	0.40	0.40
8	12	0.40	0.40	0.40
9	12	0.40	0.40	0.40
10	12	0.40	0.40	0.40
11	12	0.40	0.40	0.40
12	12	0.40	0.40	0.40
13	12	0.40	0.40	0.40
14	12	0.40	0.40	0.40
15	12	0.40	0.40	0.40
16	12	0.40	0.40	0.40
17	12	0.40	0.40	0.40
18	12	0.40	0.40	0.40
19	12	0.40	0.40	0.40
20	12	0.40	0.40	0.40
21	12	0.40	0.40	0.40
22	12	0.40	0.40	0.40
23	12	0.40	0.40	0.40
24	12	0.40	0.40	0.40
25	12	0.40	0.40	0.40
26	12	0.40	0.40	0.40
27	12	0.40	0.40	0.40
28	12	0.40	0.40	0.40
29	12	0.40	0.40	0.40
30	12	0.40	0.40	0.40
31	12	0.40	0.40	0.40
32	12	0.40	0.40	0.40
33	12	0.40	0.40	0.40
34	12	0.40	0.40	0.40
35	12	0.40	0.40	0.40
36	12	0.40	0.40	0.40
37	12	0.40	0.40	0.40
38	12	0.40	0.40	0.40
39	12	0.40	0.40	0.40
40	12	0.40	0.40	0.40
41	12	0.40	0.40	0.40
42	12	0.40	0.40	0.40
43	12	0.40	0.40	0.40
44	12	0.40	0.40	0.40
45	12	0.40	0.40	0.40
46	12	0.40	0.40	0.40
47	12	0.40	0.40	0.40
48	12	0.40	0.40	0.40
49	12	0.40	0.40	0.40
50	12	0.40	0.40	0.40
51	12	0.40	0.40	0.40
52	12	0.40	0.40	0.40
53	12	0.40	0.40	0.40
54	12	0.40	0.40	0.40
55	12	0.40	0.40	0.40
56	12	0.40	0.40	0.40
57	12	0.40	0.40	0.40
58	12	0.40	0.40	0.40
59	12	0.40	0.40	0.40
60	12	0.40	0.40	0.40
61	12	0.40	0.40	0.40
62	12	0.40	0.40	0.40
63	12	0.40	0.40	0.40
64	12	0.40	0.40	0.40
65	12	0.40	0.40	0.40
66	12	0.40	0.40	0.40
67	12	0.40	0.40	0.40
68	12	0.40	0.40	0.40
69	12	0.40	0.40	0.40
70	12	0.40	0.40	0.40
71	12	0.40	0.40	0.40
72	12	0.40	0.40	0.40
73	12	0.40	0.40	0.40
74	12	0.40	0.40	0.40
75	12	0.40	0.40	0.40
76	12	0.40	0.40	0.40
77	12	0.40	0.40	0.40
78	12	0.40	0.40	0.40
79	12	0.40	0.40	0.40
80	12	0.40	0.40	0.40
81	12	0.40	0.40	0.40
82	12	0.40	0.40	0.40
83	12	0.40	0.40	0.40
84	12	0.40	0.40	0.40
85	12	0.40	0.40	0.40
86	12	0.40	0.40	0.40
87	12	0.40	0.40	0.40
88	12	0.40	0.40	0.40
89	12	0.40	0.40	0.40
90	12	0.40	0.40	0.40
91	12	0.40	0.40	0.40
92	12	0.40	0.40	0.40
93	12	0.40	0.40	0.40
94	12	0.40	0.40	0.40
95	12	0.40	0.40	0.40
96	12	0.40	0.40	0.40
97	12	0.40	0.40	0.40
98	12	0.40	0.40	0.40
99	12	0.40	0.40	0.40
100	12	0.40	0.40	0.40

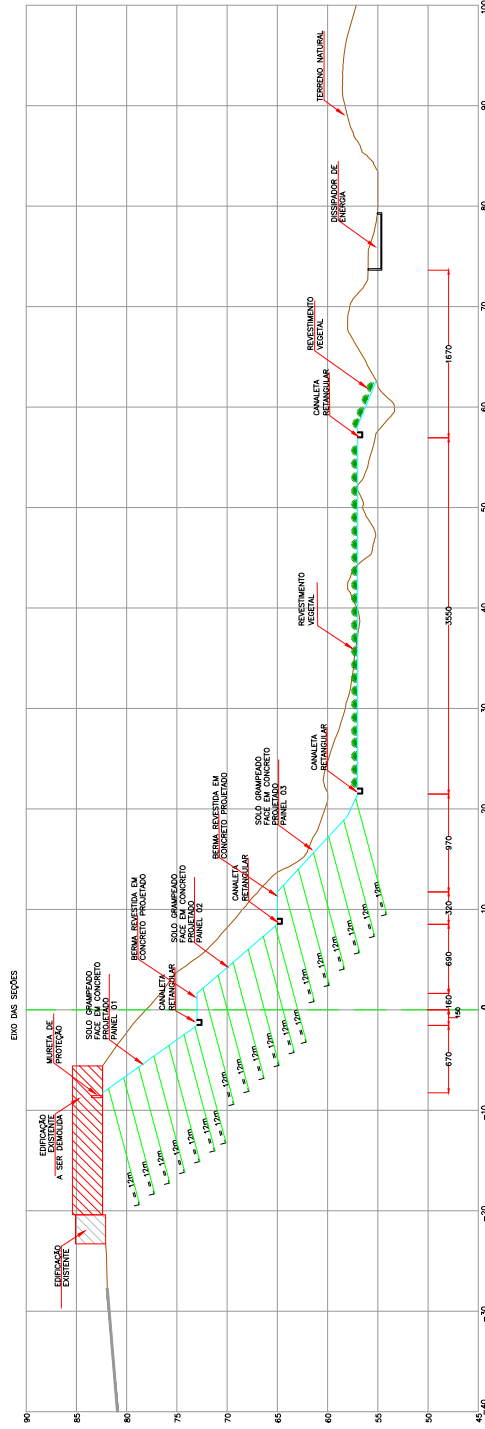
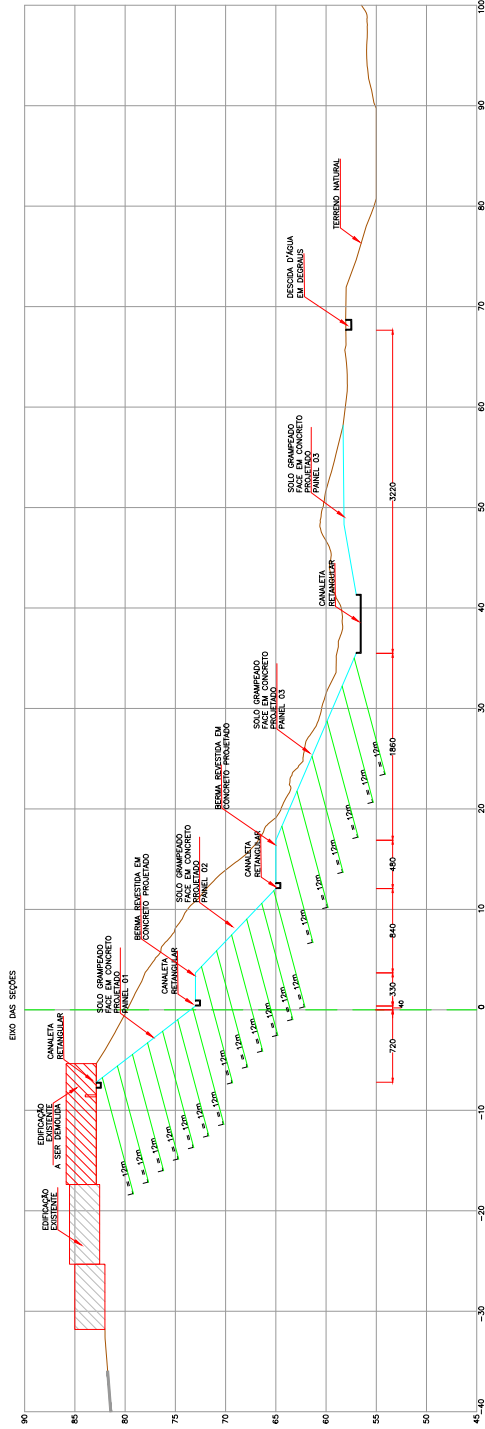
QUANTIDADES UNITÁRIAS (H NERVURAS)				
CC001	m³	kg	m²	kg
Concreto fck = 25MPa	0.002	12.000	1.000	1.000
Ar 10mm	0.002	12.000	1.000	1.000



Prefeitura de Macaé	
SECRETARIA DE OBRAS	
BRASILEL MACAÉ MACAÉS CAVACANT nº 07113355-1	CONTEÇÃO - ESTABILIZAÇÃO DE TALUDES JOÃO SAMPAIO JARDIM PETRÓPOLIS II







## LEGENDA



CANALETA RETANGULAR

DESCIDA EM DEGRAUS



EDIFICAÇÃO EXISTENTE

EDIFICAÇÃO EXISTENTE A SER DEMOLIDA

[illegible]

## Prefeitura de Macaíó



## DISCUSSION

THE RESPONSIVE  
MACHINE

## CONTENÇÃO - ESTABILIZAÇÃO DE TALUDES

JOÃO SAMPAIO

JARDIM PETRÓPOLIS II

### PROJETO DE CONTEÚDO TRANSVERSAL

Year	Year
------	------

FORM	0	FORM	A1
------	---	------	----

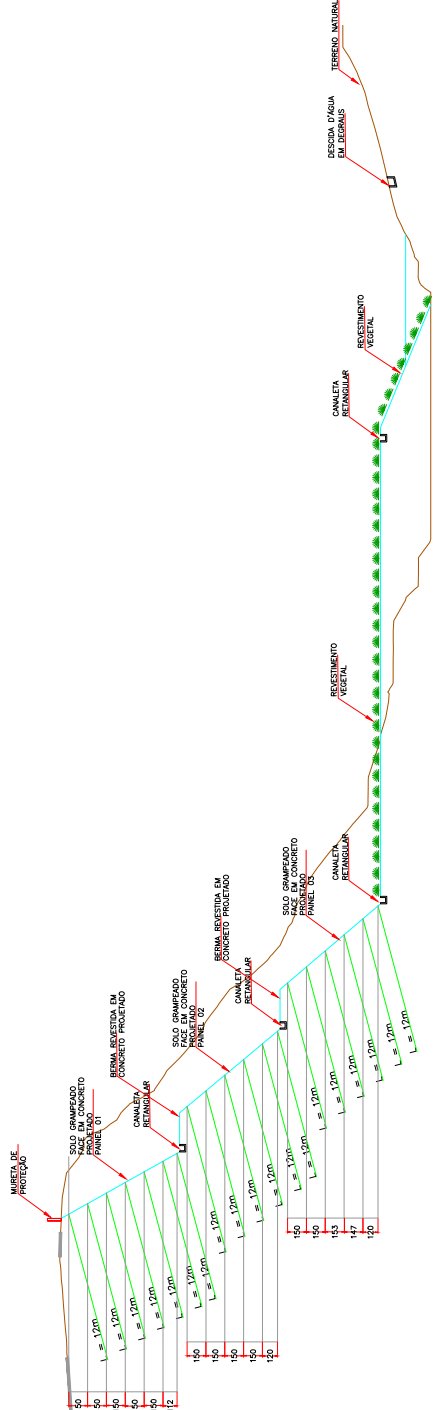
2265.01.02-PPM-JSP



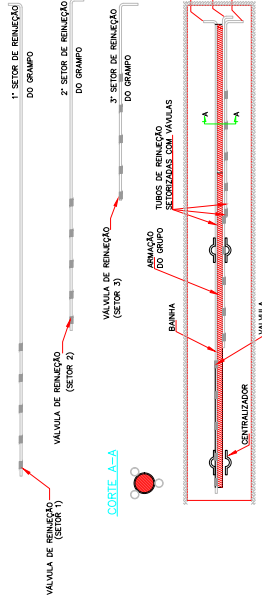




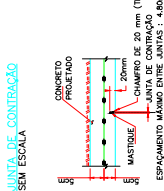




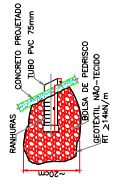
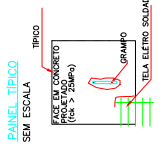
**ESQUEMA DE INJEÇÃO VER NOTA 11**  
**SEM ESCALA**



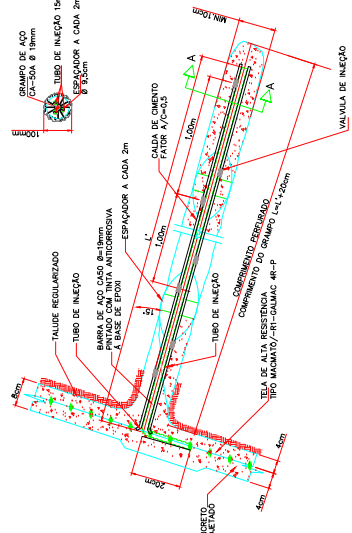
1) **DE REINJEÇÃO**

CORTE\_D-D  
FSC. - 1:10

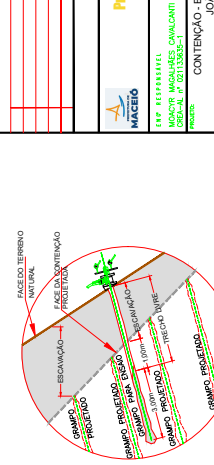
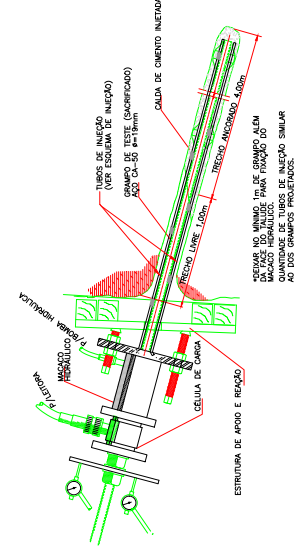
**PAINEL TÍPICO SEM ESCALA**



**ENSAIO DE ARRANCAMENTO – MONTAGEM DO GRAMPO**  
**S/ESC**



ENSAIO  
S/ESC



---

<p>EXP. REGISTRAR CNPJ Nº 06.940.238/0001-90 CNPJ Nº 02.113.835-3</p>	<p>CONDOMÍNIO NED</p>
<p>PROPOSTA</p>	
<p>CONTEÚDO - ESTABILIZAÇÃO DE TALUDES</p>	
<p>JOÃO SAMPAIO</p>	
<p>JARDIM PETRÓPOLIS II</p>	
<p>LOCAL</p>	
<p>TÍTULO</p>	
<p>PROJETO BÁSICO SOLO GRAFMEADO SEÇÃO TÍPICA E DETALHES</p>	
<p>PREV. MAIOR</p>	<p>PREV. MENOR</p>
<p>DESCRIÇÃO</p>	<p>RECU</p>
<p>QUANT.</p>	<p>VALOR</p>
<p>DATA</p>	<p>FECH.</p>
<p>06/06/2022</p>	<p>01/01</p>
<p>22.625.011.02-PPM-USP-PE-DE-CON-0088</p>	

